

MUND CONSULTING LTD

Sparklet User Guide

Sparklet: Apache Spark & Zeppelin Installer for
Windows 64 bit



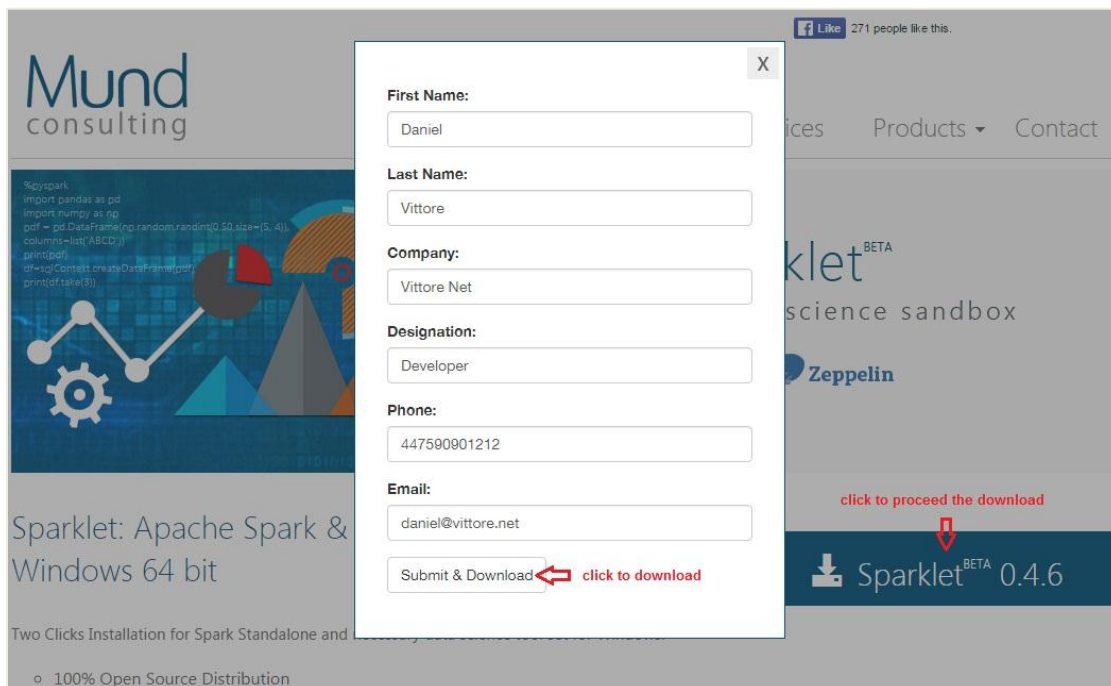
Step by step user guide for download and installation.

Sparklet: Apache Spark & Zeppelin Installer for Windows 64 bit

Sparklet is the Windows 64 bit installer for Apache Spark 1.6.0 and Zeppelin 0.5.6. It enables installation with just couple of clicks.

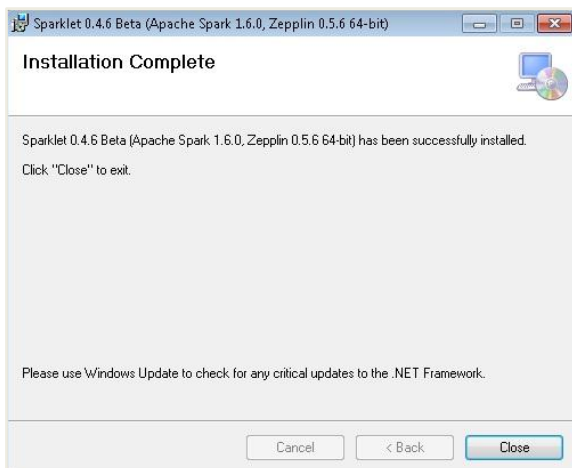
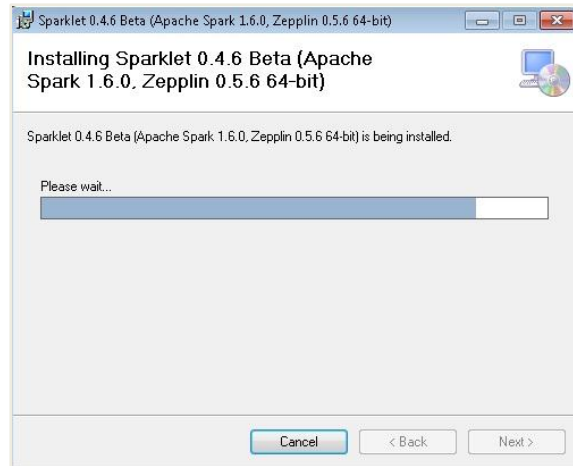
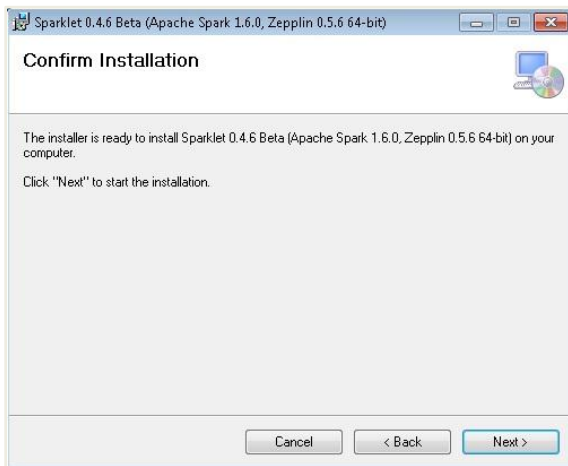
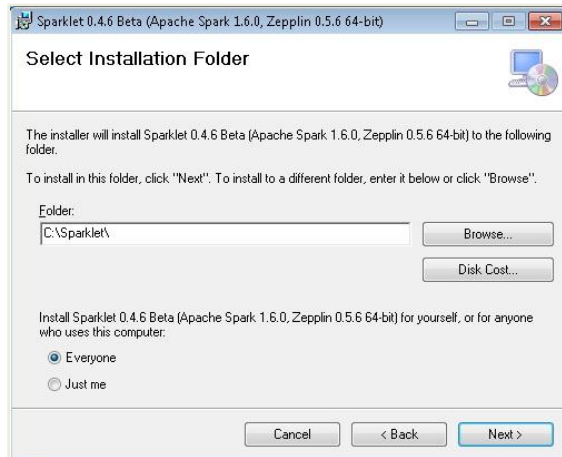
Download

- Go to the product page <http://mund-consulting.com/Products/Sparklet.aspx>
- Simply click on Sparklet^{BETA} 0.4.6 download button to proceed with the download.
- Fill up the form and click on Submit & Download button to start the download.



Installation

- Before installation make sure that following prerequisites are installed in your system.
 - [Java Development Kit 7](#) or later version
 - [Microsoft Visual C++](#)
 - If you want to use pySpark (Python API for spark) then ensure that you have a Python distribution installed in your system.
- Double click on the downloaded installer (Sparklet-0.4.6.msi) and follow through the steps to complete the installation.



- After successful installation, a shortcut to start Zeppelin (and Spark) will be available on your desktop.
- To start working with Zeppelin double click the Zeppelin shortcut on your desktop or double click on <Installation folder>\bin\zeppelin.exe, e.g. C:\Sparklet\bin\zeppelin.exe to start the Zeppelin Server and Zeppelin Web Application.
- Make sure you run with admin privileges and do not close the Zeppelin Server console while you are using Zeppelin Web Application.

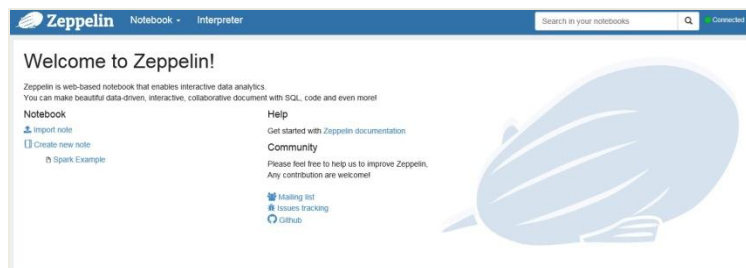
```

C:\Sparklet\bin\zeppelin.exe
Starting Zeppelin Server...

C:\Windows\system32\cmd.exe - mc-zeppelin.cmd

SLF4J: Class path contains multiple SLF4J bindings.
SLF4J: Found binding in [jar:file:/C:/Sparklet/lib/zeppelin-interpreter-0.5.6-incubating.jar!/org/slf4j/impl/StaticLoggerBinder.class]
SLF4J: Found binding in [jar:file:/C:/Sparklet/lib/slf4j-log4j12-1.7.10.jar!/org/slf4j/impl/StaticLoggerBinder.class]
SLF4J: See http://www.slf4j.org/codes.html#multiple_bindings for an explanation.
SLF4J: Actual binding is of type [org.slf4j.impl.Log4jLoggerFactory]
Feb 15, 2016 10:51:03 AM com.sun.jersey.api.core.PackagesResourceConfig init
INFO: Scanning for root resource and provider classes in the packages:
org.apache.zeppelin.rest
Feb 15, 2016 10:51:03 AM com.sun.jersey.api.core.ScanningResourceConfig logClasses
INFO: Root resource classes found:
class org.apache.zeppelin.rest.ZeppelinRestApi
class org.apache.zeppelin.rest.NotebookRestApi
class org.apache.zeppelin.rest.InterpreterRestApi
Feb 15, 2016 10:51:03 AM com.sun.jersey.api.core.ScanningResourceConfig init
INFO: No provider classes found.
Feb 15, 2016 10:51:03 AM com.sun.jersey.server.impl.application.WebApplicationImpl _initiate
INFO: Initiating Jersey application, version 'Jersey: 1.13 06/29/2012 05:14 PM'

```



Install Newer Version

If you are installing a newer version of Sparklet, it is recommended to uninstall the previous version of Sparklet from your system.

To find more on Zeppelin and how it works with Apache Spark, please refer to the following link:
<https://zeppelin.incubator.apache.org/>

For a quick overview of how Spark with Zeppelin can be used for complete data science/advanced analytics life cycle, follow the video in the link below:
<https://www.youtube.com/watch?v=J6Ei1RMG5Xo>

Current Issues

With the current beta distribution, the Scala/Spark interpreter works properly. You may encounter following error(s) while working with PySpark (Python API):

- “pyspark is not responding” Error may come while using python Spark context.
- “Python worker did not connect back in time” Exception may come while using python Spark context in Windows 10

Other interpreters will be included in the coming versions.

Feedback

For any feedback on Sparklet please drop an email with the subject line, “*Sparklet Feedback*” to support@mund-consulting.com